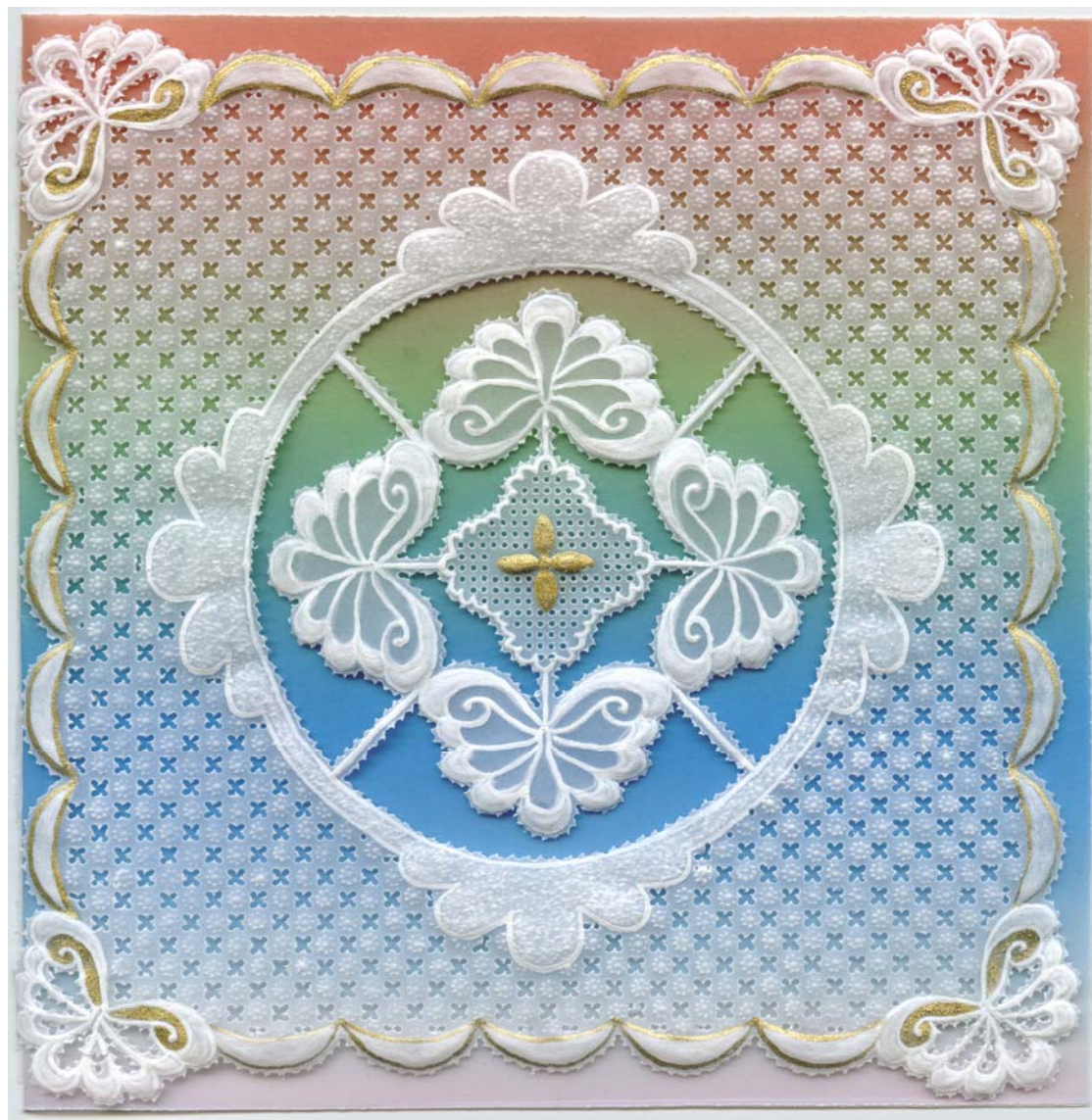


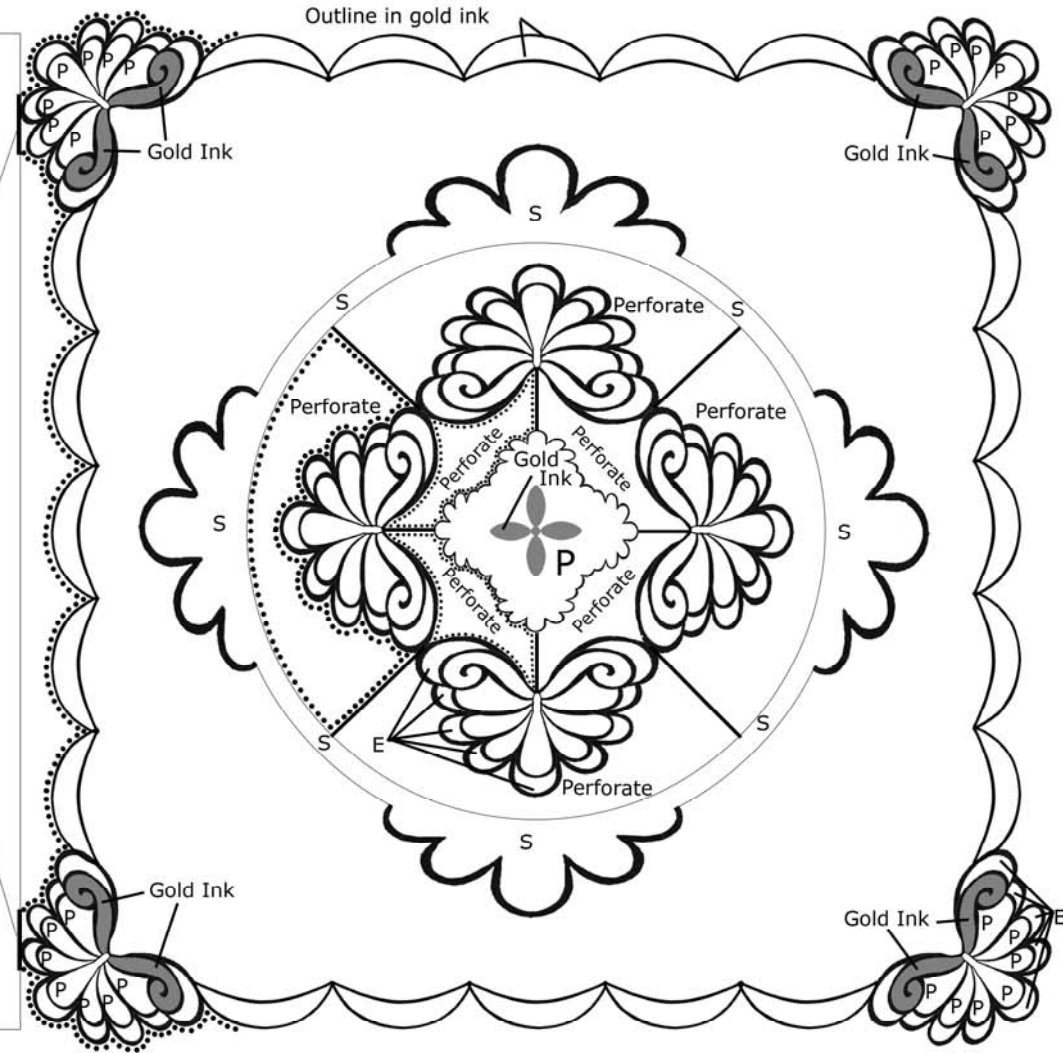
Lace Card Parchment Craft Pattern by Gilly Howe



Pattern 2

Back of card

Fold Lines



Instructions

You will need:

Standard parchment paper
White ink (white Tinta ink used)
Gold ink (gold Tinta ink used)
Mapping pen
Bold PCA FlexiDuo straight grid
Bold single needle perforating tool
Small embossing tool
Medium embossing tool
Large embossing tool
Small Sun tool

There are 2 patterns provided in these instructions, Pattern 1 and Pattern 2. Pattern 1 has been provided for tracing and Pattern 2 is marked with additional instructions.

Trace

Lay an A4 sheet of parchment over Pattern 1. Trace in gold ink where marked on pattern 2, as shown in the example, using the mapping pen. Fill in the small central design and the areas in the corner design with gold ink as marked in grey on pattern 2. Trace the remainder of the pattern in white ink using a mapping pen.

Emboss

Using the small embossing tool, emboss all outlines. Emboss in between the gold outlines of the border edging using small/medium embossing tools. Emboss the outer areas of the corner designs and the outer areas of the central design as shown on pattern 2 and the example. Emboss the central gold design.

Using the large embossing tool, very lightly emboss the area marked 'S' on Pattern 2. Then stipple (hammer using the perforating tool on a hard surface) this same area. As an alternative to stippling, this area could simply be embossed.

Gridwork

Using the bold grid and perforating tool, perforate the area in between the border edging and the central stippled area as shown on the Grid Instructions. Then turn your work over and use a sun tool to mark in between the perforations as shown on the chart. Using a small embossing tool emboss a small dot in each sun tool mark. If a sun tool is not available a larger dot can be embossed in between the perforations. Cut the perforations as indicated on the chart. Place the work back on the grid and perforate every grid hole in the central area marked 'P' on Pattern 2 around the gold central design. (see example picture).

Perforate/Cut

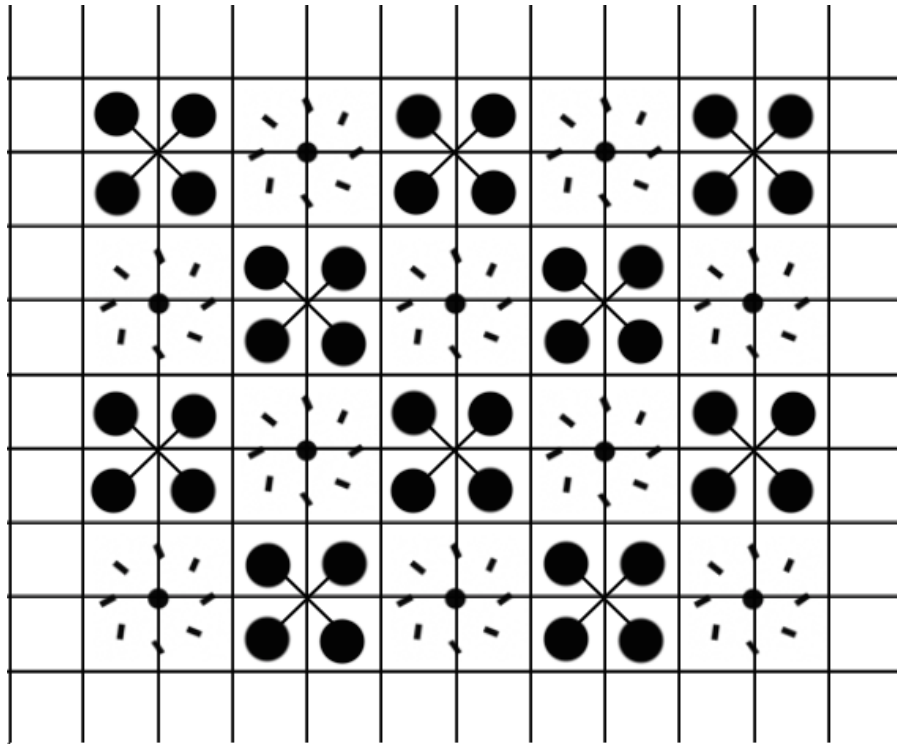
Perforate the central areas as indicated on Pattern 2 with a black dotted line and marked with 'Perforate'. Cut the perforations to remove these areas. Perforate all around the card as shown on Pattern 2 being careful not to perforate the two fold lines that attach the front design to the back of the card. Cut these perforations to remove the excess parchment. You will also need to trim the back of the card to size with a paper trimmer, craft knife or scissors.

Perforate around the inside edge of the areas marked 'P' in the corner designs on Pattern 2. Cut and remove these areas.

Finishing

Emboss the two fold lines at the top and bottom edges of the card as marked on Pattern 2. Fold the parchment along the embossed fold line. This can be attached to a card liner of your colour choice or to an additional parchment sheet, cut to size and folded in the centre. A piece of rainbow parchment has been used in the example.

Grid Instructions



● - Perforate

∨ - Cut

☼ - Sun tool