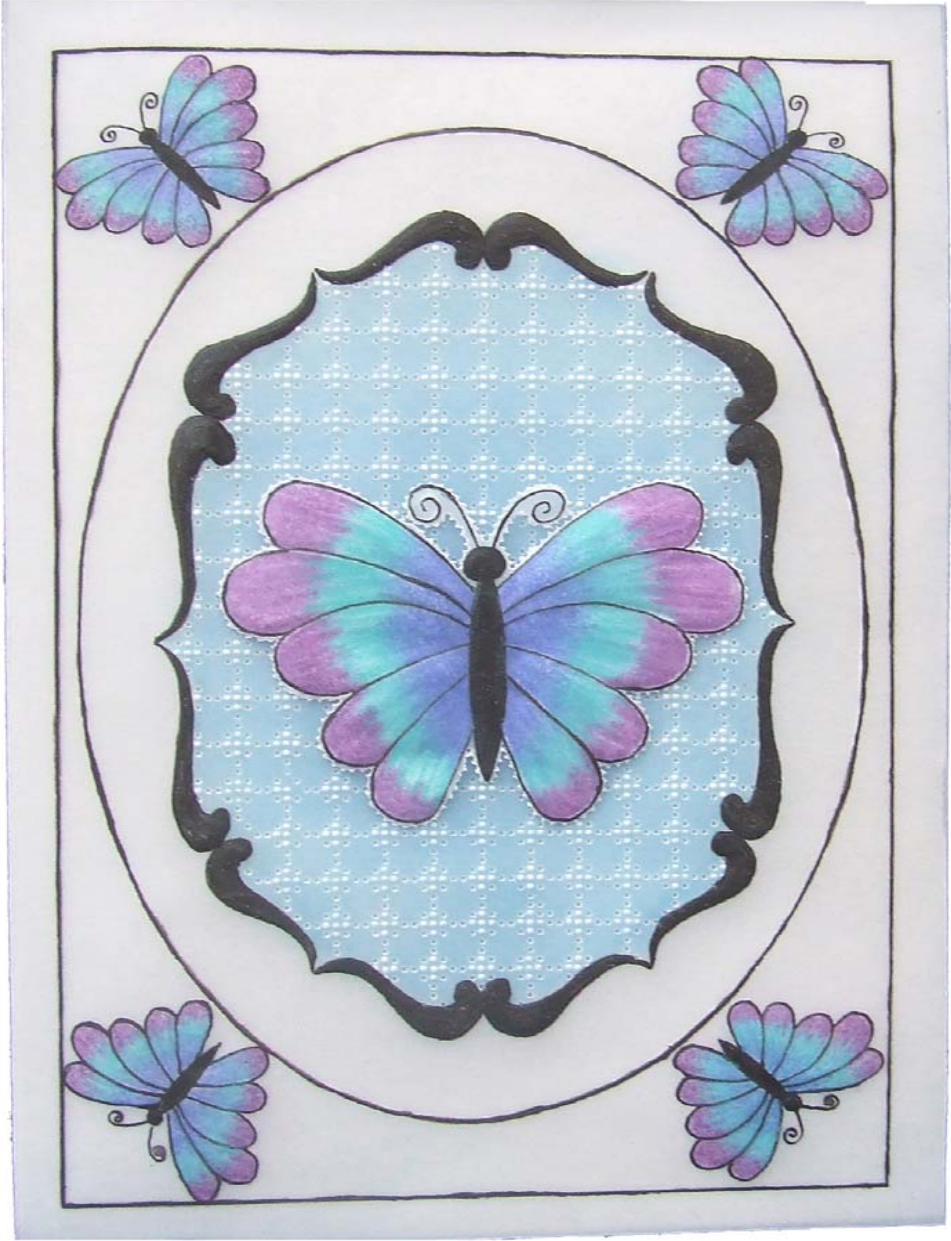


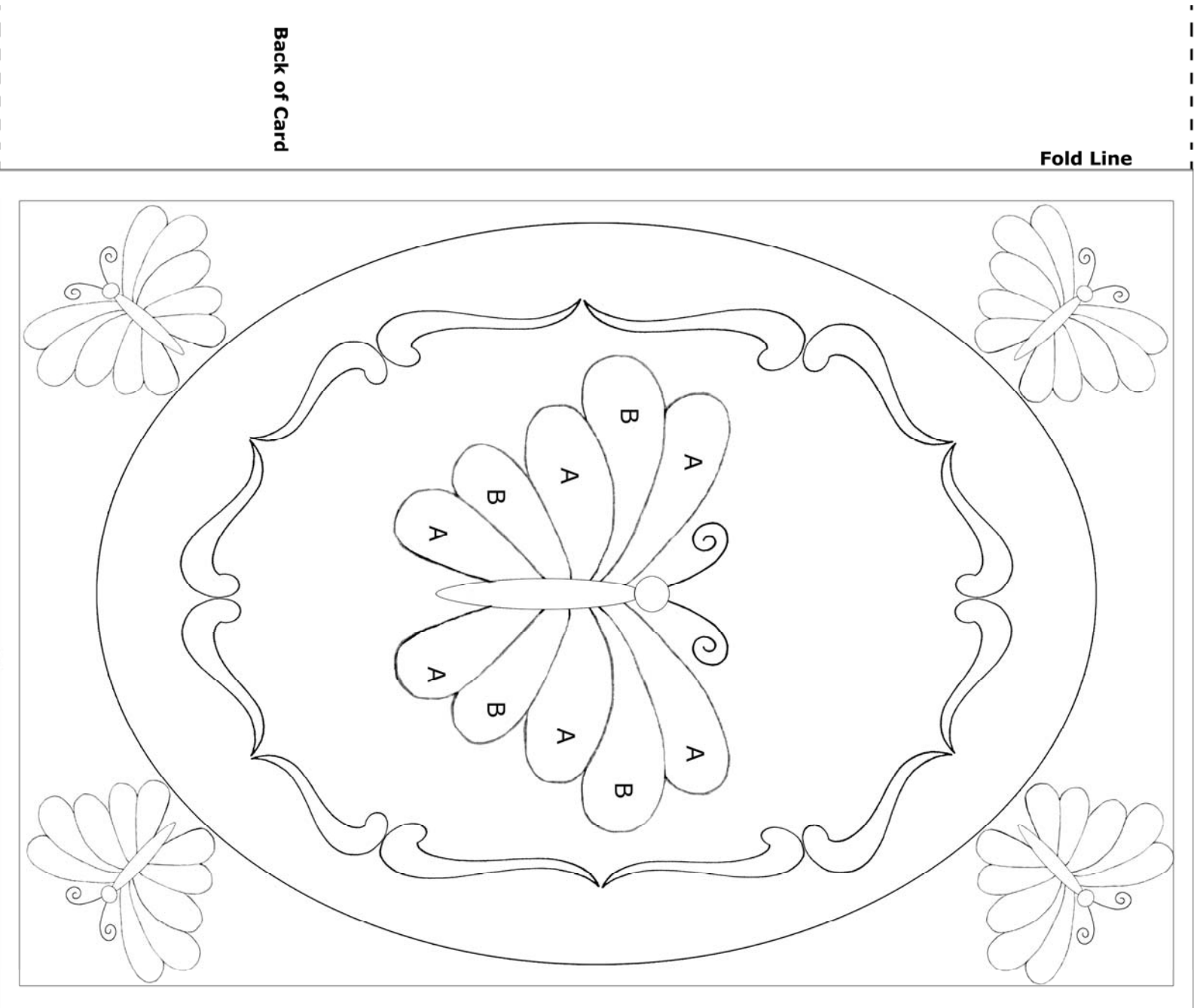
Butterflies with Scroll Border Parchment Craft Pattern by Gilly Howe

Colour Example



White Example





© parchmentpatterns.com 2008

Butterflies with Scroll Border Instructions

Colour Example

You will need:

Standard A4 parchment paper

White pencil

Mapping pen

Black ink (black Tinta ink used)

Black paint (black Pintura paint used)

Fine paint brush

Blue oil pastel

Blending medium

3 contrasting coloured pencils (polychromos pencils – ultramarine, cobalt green and manganese violet used)

Blender pencil

Bold PCA FlexiDuo straight grid

Bold single needle perforating tool

Small embossing tool

Medium embossing tool

Large embossing tool

Silicone glue (or other 3D glue)

Trace

Trace the whole pattern (except the fold line and the large central butterfly) in black ink onto a sheet of A4 parchment. Trace the fold line using a white pencil and a ruler. On a separate sheet of parchment trace the central large butterfly design in black ink.

Colour

Paint the scroll border design and the butterfly bodies (the four small butterflies and the separate large central butterfly) with black paint.

Apply blue oil pastel to the area inside the scroll design and spread with blending medium.

Colour the butterfly wings with the three contrasting colours as shown in the picture. Leave fairly jagged edges to each block of colour to achieve a nicely blended effect.

Go over the coloured butterfly wings with the blender pencil – this step is not strictly necessary and the wings can be left after colouring with the coloured pencils. However, if a blender pencil is available this achieves a nicely blended and slightly glossy effect.

Emboss

Using the small embossing tool, emboss the outer border line, the inner oval line, the small butterfly bodies and all butterfly antennae.

Using the small and medium embossing tools, emboss the scroll border design.

Using the large embossing tool, emboss the large butterfly body and each section of the wings of each butterfly, small and large.

Gridwork

Using the bold grid perforate the area inside the border as shown on chart 1 or 2 (as preferred) then turn your work over and emboss the holes on the grid following the same chart.

Perforate/Cut

Perforate around the separate large butterfly and cut the perforations to remove the butterfly.

Finishing

Lightly emboss fold line and fold the parchment. This can be attached to a card liner of your colour choice or to an additional parchment sheet, folded in the centre, as in the example.

Using silicone (or other 3D glue), attach the large butterfly to the centre of the card.

White Example

You will need:

Standard parchment paper

White pencil

Mapping pen

Gold ink (gold Tinta ink used)

Bold PCA FlexiDuo straight grid

Bold single needle perforating tool

Small embossing tool

Medium embossing tool

Large embossing tool

Shader tool

Silicone glue (or other 3D glue)

Trace

Trace the oval and the small butterflies in gold ink using the mapping pen onto a sheet of parchment. Trace the remainder of the pattern (except the large central butterfly) in white pencil. On a separate sheet of parchment trace the central large butterfly design in white pencil.

Emboss

Using the small embossing tool, emboss the fold line, the outer border line, the inner oval line, the small butterfly bodies and the wing outlines and antennae of all butterflies.

Using the small and medium embossing tools, emboss the scroll border design.

Using the shader (or large embossing tool, if unavailable) lightly emboss the small butterfly wings starting at the centre and shading outwards.

Using the large embossing tool, emboss the large butterfly body

Gridwork

Using the bold grid and perforating tool, perforate the area inside the scroll border as shown on chart 1 or 2 (as preferred) then turn your work over and emboss the holes on the grid following the same chart.

Shallow perforate the areas marked 'A' of the large butterfly as shown on chart 3. Turn your work over and emboss the dots. Perforate each hole of the grid in the areas of the large butterfly marked 'B' and re-perforate deeply the 'A' areas in between the embossed dots. Cut the perforations on the 'A' areas as indicated on the chart.

Perforate/Cut

Perforate around the separate large butterfly and cut the perforations to remove the butterfly.

Perforate around the inner edge of the rectangular border, in between the small butterflies and the outer edge of the oval, and as shown on the pattern. Once perforated cut these areas away.

Finishing

Fold the parchment along the embossed fold line. This can be attached to a card liner of your colour choice or to an additional parchment sheet, folded in the centre, as has been used in the example. Using silicone (or other 3D glue), attach the large butterfly to the centre of the card.

Grid Instructions

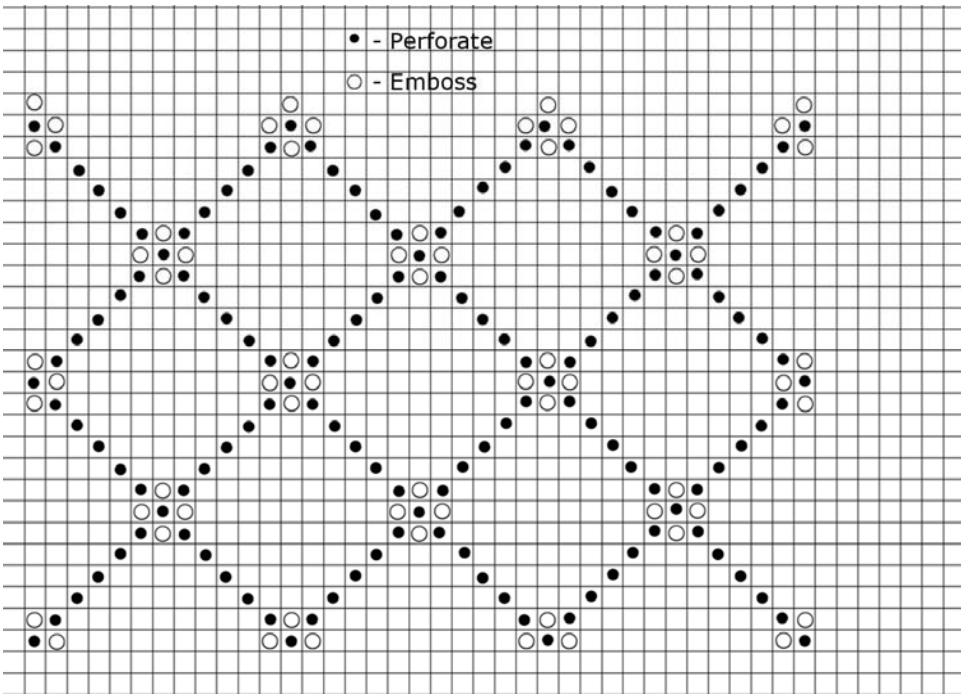


Chart 1 showing grid pattern for area inside scroll border on white example

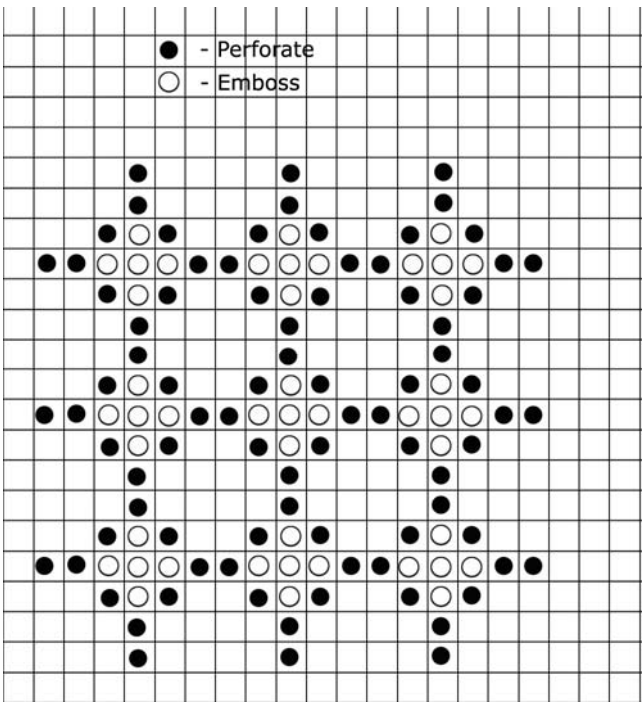


Chart 2 showing grid pattern for area inside scroll border on coloured example

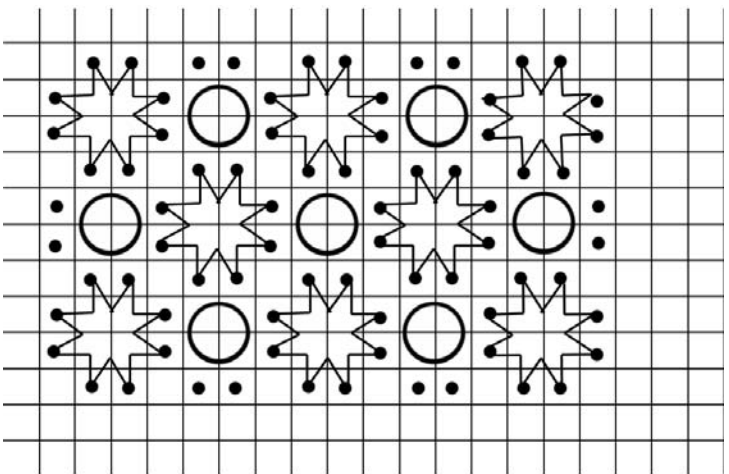


Chart 3 showing grid pattern for areas marked 'A' on butterfly wings

Close Up of Examples

